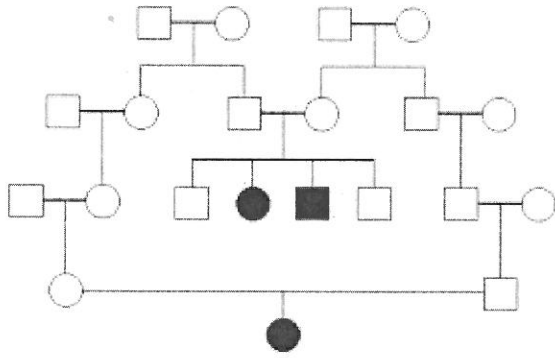
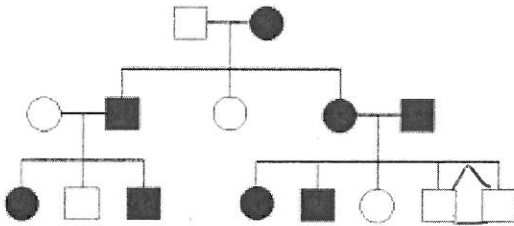


11. Why do boys have more sex-linked traits than girls? Why are mothers often carriers of sex-linked traits but do not show the trait?

12. Read and analyze a pedigree (sample).



a.



b.

For Pedigree "a":

1. What symbol represents a male?
2. How many generations does this show?
3. Is it a dominant trait or recessive trait? Explain.

4. Make the symbol for a male carrier below: _____

For Pedigree "b":

1. How do we show marriage with a pedigree?
2. Circle the person who never married.
3. Does the grandmother or grandfather have the trait?
4. Are there any twins in this pedigree? If so, are they fraternal or identical?