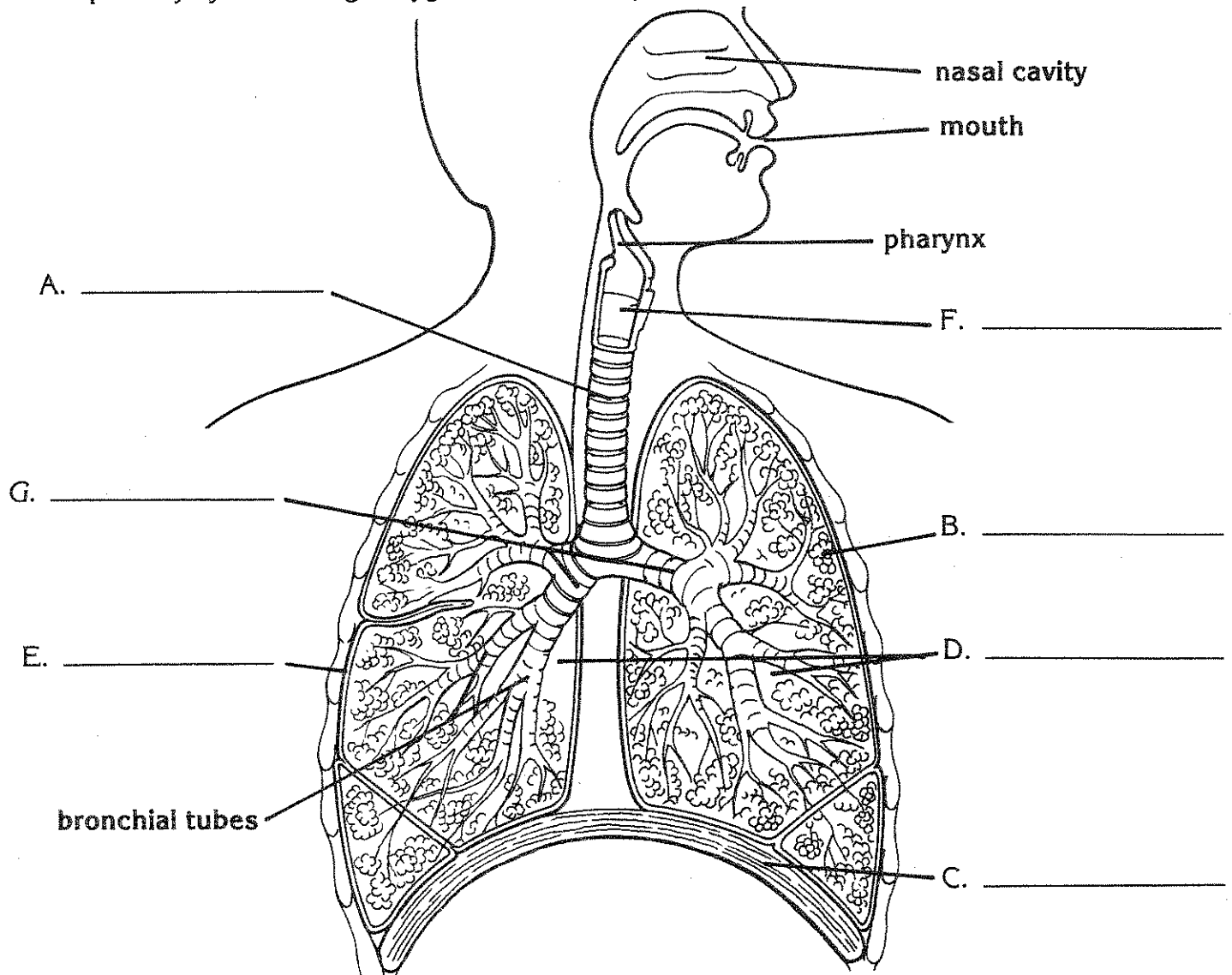


# The Respiratory System

The respiratory system brings oxygen into the body and removes carbon dioxide and other gases.



1. Study the diagram to correctly identify these parts of the respiratory system. Then use each answer to correctly label the diagram.

- A. the tube that connects the throat and the bronchial tubes \_\_\_\_\_
- B. the grape-like clusters of air sacs within the lungs \_\_\_\_\_
- C. the large band of muscle that controls the size of the chest cavity \_\_\_\_\_
- D. the two large lightweight respiratory organs of the body \_\_\_\_\_
- E. the outer membrane which covers the lungs \_\_\_\_\_
- F. the part of the respiratory system that helps us speak \_\_\_\_\_
- G. the two branches of the windpipe \_\_\_\_\_

2. Write **True** if the statement is true. Write **False** if the statement is false.

\_\_\_\_\_ The teeth are an important part of the respiratory system.